

CCTvenues

DOCKLANDS

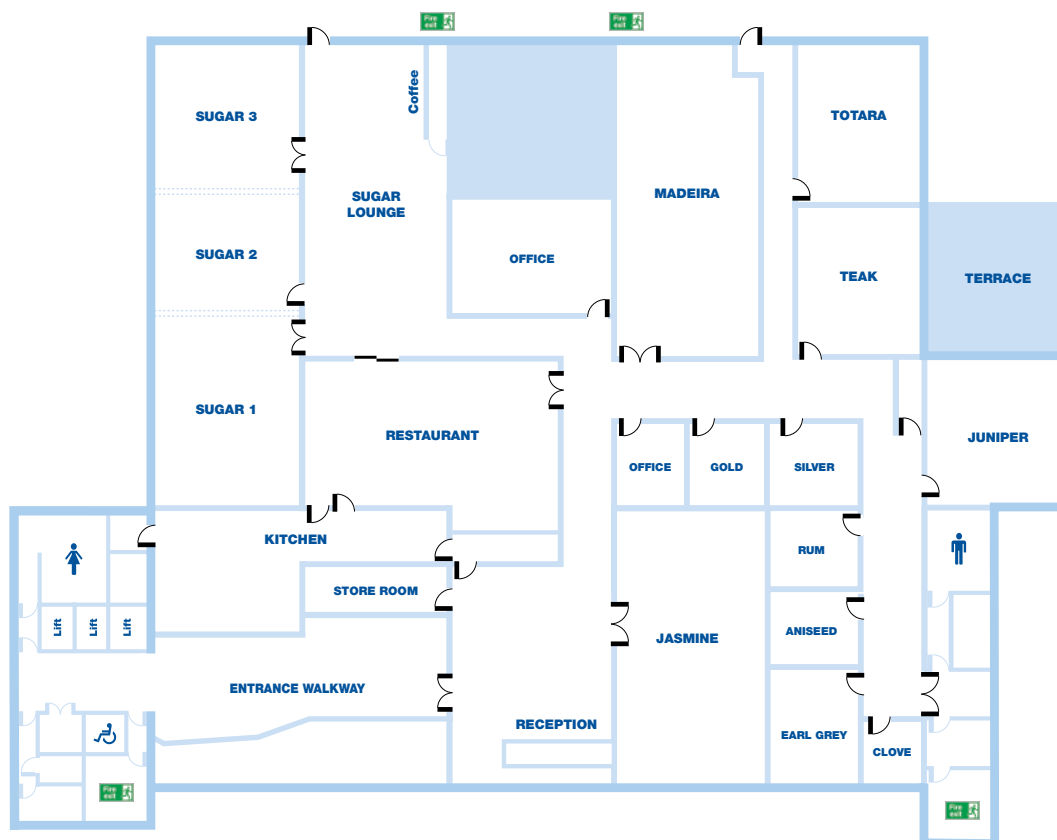
CCT Venues-Docklands



Experts in Event Space

- Located opposite South Quay DLR station and less than 10 minutes' walk from Canary Wharf in a waterfront setting
- Fourteen individually air-conditioned meeting rooms with flexible space for up to 250 delegates
- Conference suite with private exhibition area/lounge
- Dockland inspired interiors and bespoke furniture
- Digital signage by every meeting room door, to offer a bespoke welcome
- High-speed technology, large plasma screens and excellent AV facilities in every room, with full technical support
- Modern restaurant offering excellent food from award winning chefs

Rooms	Size	Minimum numbers	Maximum Theatre style	Maximum Classroom style	Maximum Cabaret style tables of 8	Maximum Banqueting style tables of 10	Maximum U Shape style	Maximum Board style	Exam Style	Maximum Stand-up Reception
Sugar 1/2/3	22.5 x 7.7m	100	250	120	120	200	62	62	110	-
Sugar 1/2	16.4 x 7.7m	68	200	80	96	140	44	44	-	-
Sugar 2/3	13.0 x 7.7m	64	120	64	64	100	40	40	-	-
Sugar 1	10.4 x 7.7m	36	120	48	64	100	32	32	-	-
Sugar 2	6.1 x 7.7m	32	60	32	32	50	20	20	-	-
Sugar 3	6.1 x 7.7m	32	60	32	32	50	20	20	-	-
Jasmine	13.5 x 8.1m	60	150	62	72	100	32	32	-	-
Madeira	15.3 x 7.3m	35	120	56	64	80	32	40	-	-
Totara	7.9 x 6.2m	20	60	24	32	50	22	18	-	-
Juniper	7.3 x 6.8m	25	60	32	40	50	22	18	-	-
Teak	7.3 x 6.2m	18	60	24	32	-	16	16	-	-
Earl Grey	5.9 x 4.2m	10	20	12	16	-	14	14	-	-
Gold	4.0 x 4.0m	8	-	10	-	-	-	8	-	-
Silver	4.0 x 4.0m	8	-	10	-	-	-	8	-	-
Rum	4.0 x 4.0m	8	-	10	-	-	-	8	-	-
Aniseed	4.0 x 4.0m	8	-	10	-	-	-	8	-	-
Clove	3.7 x 2.6m	4	-	4	-	-	-	4	-	-
Sugar Lounge	15.0 x 7.5m	-	-	-	-	-	-	-	-	75
Restaurant	12.5 x 7.2m	-	-	-	-	-	-	-	-	75



For bookings and enquiries:

T: 0808 168 1168 E: enquire@cctvenues.co.uk

CCT Venues–Docklands, Thames Quay, 193 Marsh Wall, London, E14 9SG